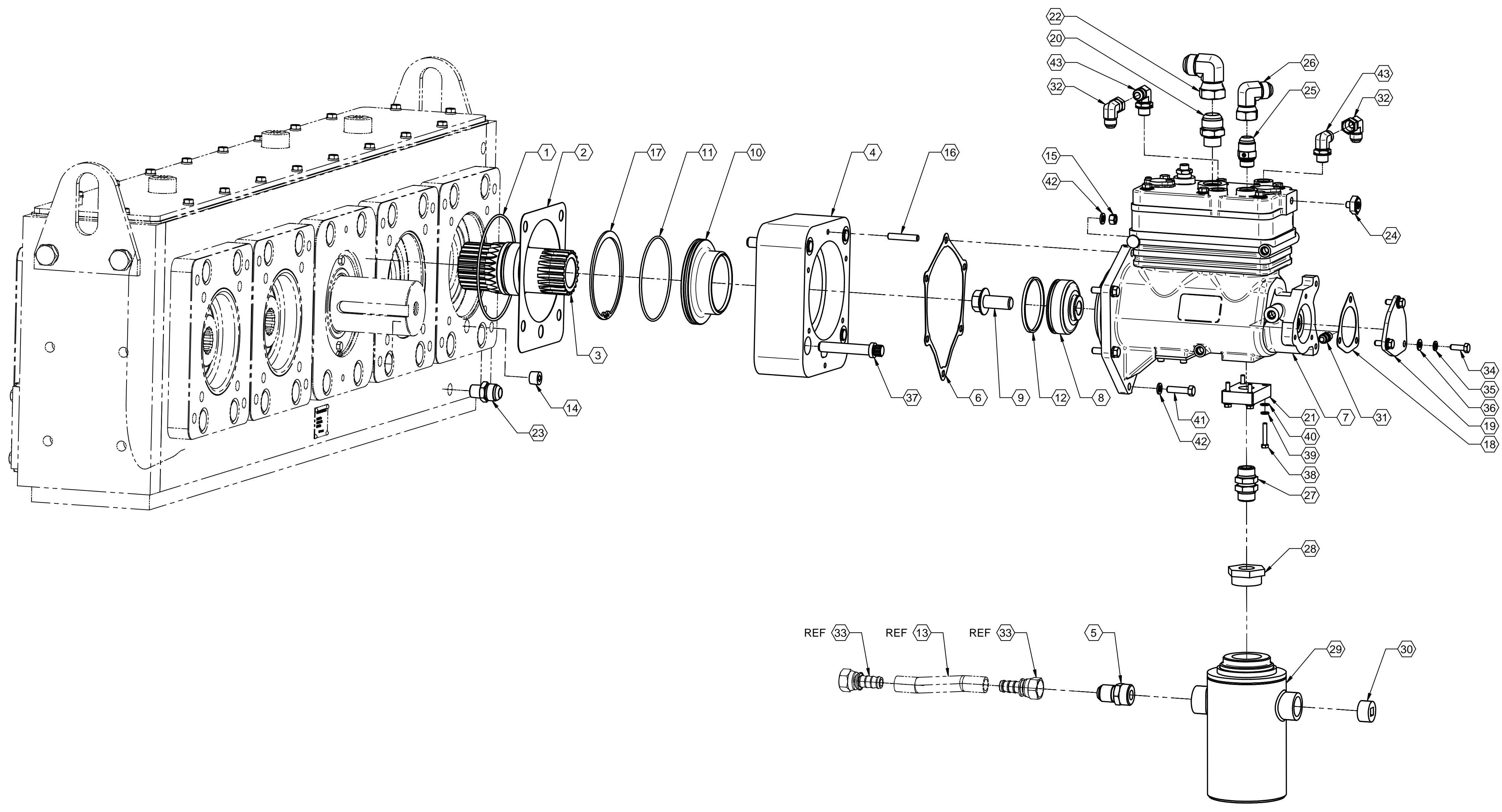


REVISIONS						
ZONE	REV	DESCRIPTION	ECN	DATE	CHK	APP
	00	RELEASED	NL11-0349	3-16	WPG	AY
	01	ADD IT 43, ADD REF TO IT 33 & 13	NL12-1865	6-21	TEW	AY



43	4264809	2	FTG HYD 90 8 MJ 18 MMO
42	0753123	6	WASHER LOCK SPR .375 .68 .09
41	4009640	5	BOLT HX .375 1.500 NC G8
40	0239224	4	WASHER FLAT .250 .56
39	0213584	4	WASHER LOCK SPR .25 .49 .06
38	4257970	4	BOLT HX M6 X 1.0 X 35 MM 10.9
37	4001897	4	CSCR FH .625 3.500 NC G8 FT
36	0753118	3	WASHER FLAT .313 .69 .08
35	0264174	3	WASHER LOCK SPR .323 .59 .08
34	4267484	3	CSCR HX 8M 12MM
33	4186449	2	FTG - SOCKTLTS -0 #12
32	4002479	2	HYD FITTING, 90-DEG 8 MJ 8 FJ
31	4243980	1	FTG HYD 0 6 MJ 12 MM
30	4013958	1	PIPE PLUG 1.00 CS SQ MAGNETIC
29	4254486	1	ASSEMBLY FILTER
28	4243516	1	FTG HYD 0°24MO 12FO
27	4267478	1	FTG HYD 0 12 MO 12 MO
26	4002481	1	FTG HYD 90 12 MJ 12 FJ SWVL
25	4243562	1	FTG HYD 0 12 MJ 22 MMO
24	4244790	1	VALVE CHECK EXHAUST ASY
23	4015753	1	FTG HYD 0 12 MJ 8 MP JUMP
22	4002483	1	FTG HYD 90 16 MJ 16 FJ SWV
21	4261554	1	PLATE - COMPRESSOR - DRAIN
20	4255252	1	FTG HYD 0 16 MJ 27 MMO
19	4261545	1	COVER - AIR COMPRESSOR
18	4261544	1	GASKET - AIR COMPRESSOR COVER
17	4006444	1	RETAINER RING 6.006 INTERNAL
16	4250533	1	STUD .375 NC 2.000
15	0812921	1	NUT HX 0.375 NC G8 PL
14	0184288	1	PIPE PLUG HEX
13	4186444	1	HOSE HYD 3/4 GEN PURPOSE
12	4241142	1	RING PISTON 3.500
11	4068830	1	O-RING .139 4.98 90D VITON
10	4241145	1	ADAPTER SEAL
9	N.P.N.	1	BOLT (SUPPLIED WITH COMPRESSOR)
8	4261525	1	HUB AIR COMPRESSOR DRIVE
7	4261543	1	AIR COMPRESSOR
6	4261527	1	GASKET AIR COMPRESSOR
5	4040561	1	FTG HYD 0 12 MJ 16 MP
4	4261526	1	ADAPTER MOUNT AIR COMPRESSOR
3	4239181	1	ASSEMBLY SLEEVE ADAPTER
2	4253534	1	GASKET COMPRESSOR ADAPTER
1	4244637	1	O-RING .139 6.48 90D VI 260
ITEM	PART NO.	QTY	DESCRIPTION

THIS DRAWING AND ALL DATA THEREIN IS THE PROPERTY OF LETOURNEAU TECHNOLOGIES. IT IS CONFIDENTIAL AND MUST NOT BE COPIED. IT IS LOANED SUBJECT TO RETURN UPON DEMAND AND IS NOT TO BE USED IN ANY WAY DETRIMENTAL TO OUR INTEREST.

INTERPRET DIM & TOL PER LETOURNEAU SPEC 1650.00.

UNLESS OTHERWISE SPECIFIED:  
 • DIMENSIONS ARE IN INCHES & APPLY BEFORE PLATING OR FINISH COATINGS.  
 • TOLERANCES ON:  
 ANGLES ±1°  
 FRACTIONS ±1/16  
 .XX DECIMAL ±.03  
 .XXX DECIMAL ±.015  
 • MACHINED CORNERS 1/64 X 45°  
 • WELD PROPERTIES SHALL MEET THE MINIMUM REQUIREMENTS OF THE BASE MATERIAL.

THIRD ANGLE PROJECTION

FIRST USED ON/CONTRACT NO  
426-1367

DWN	wgoff	DATE	3-16-11
CHK	AY	DATE	3-16-11
ENGR	AY	DATE	3-16-11
PROD ENGR			
PROJ APPROVAL			
MATL			

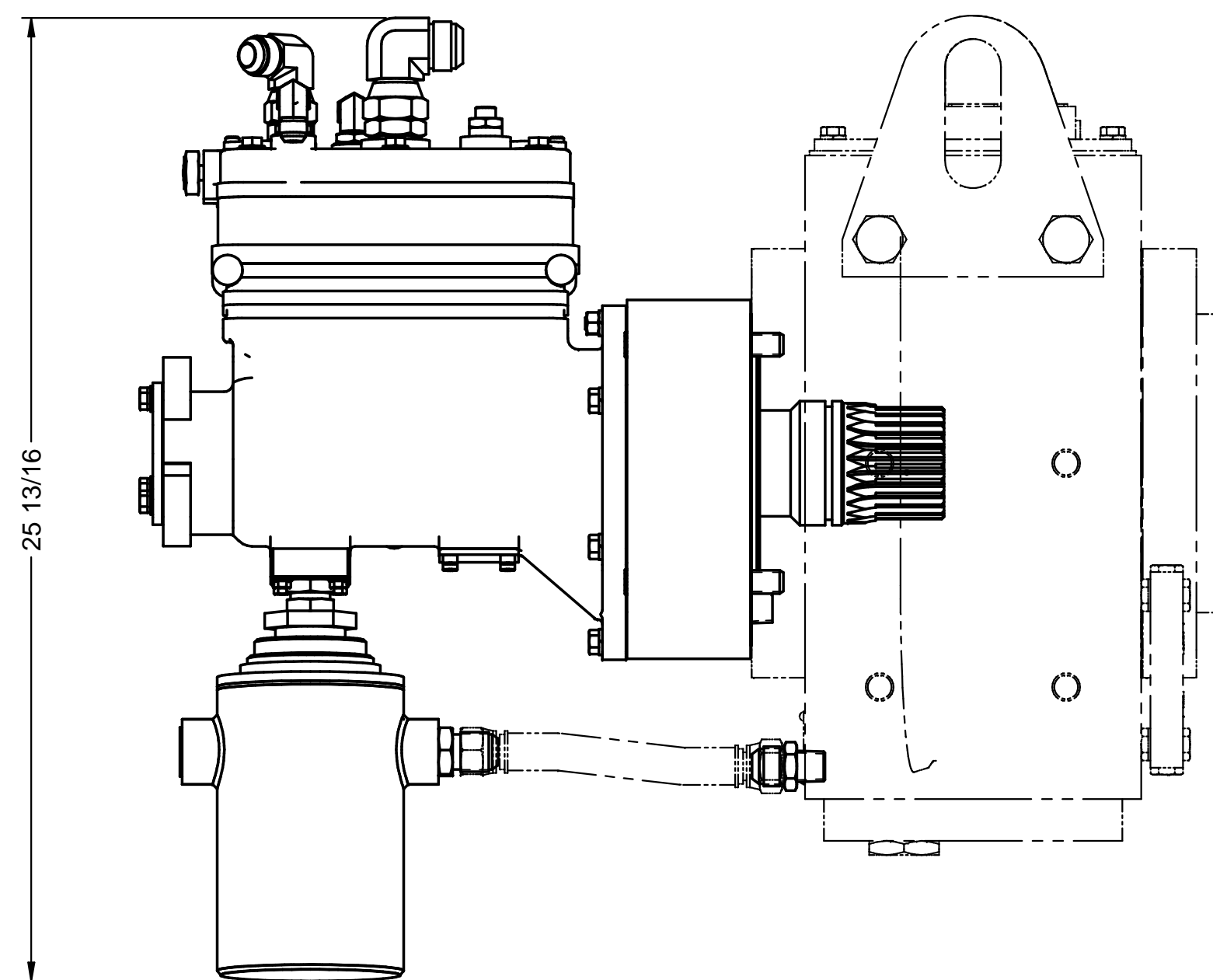
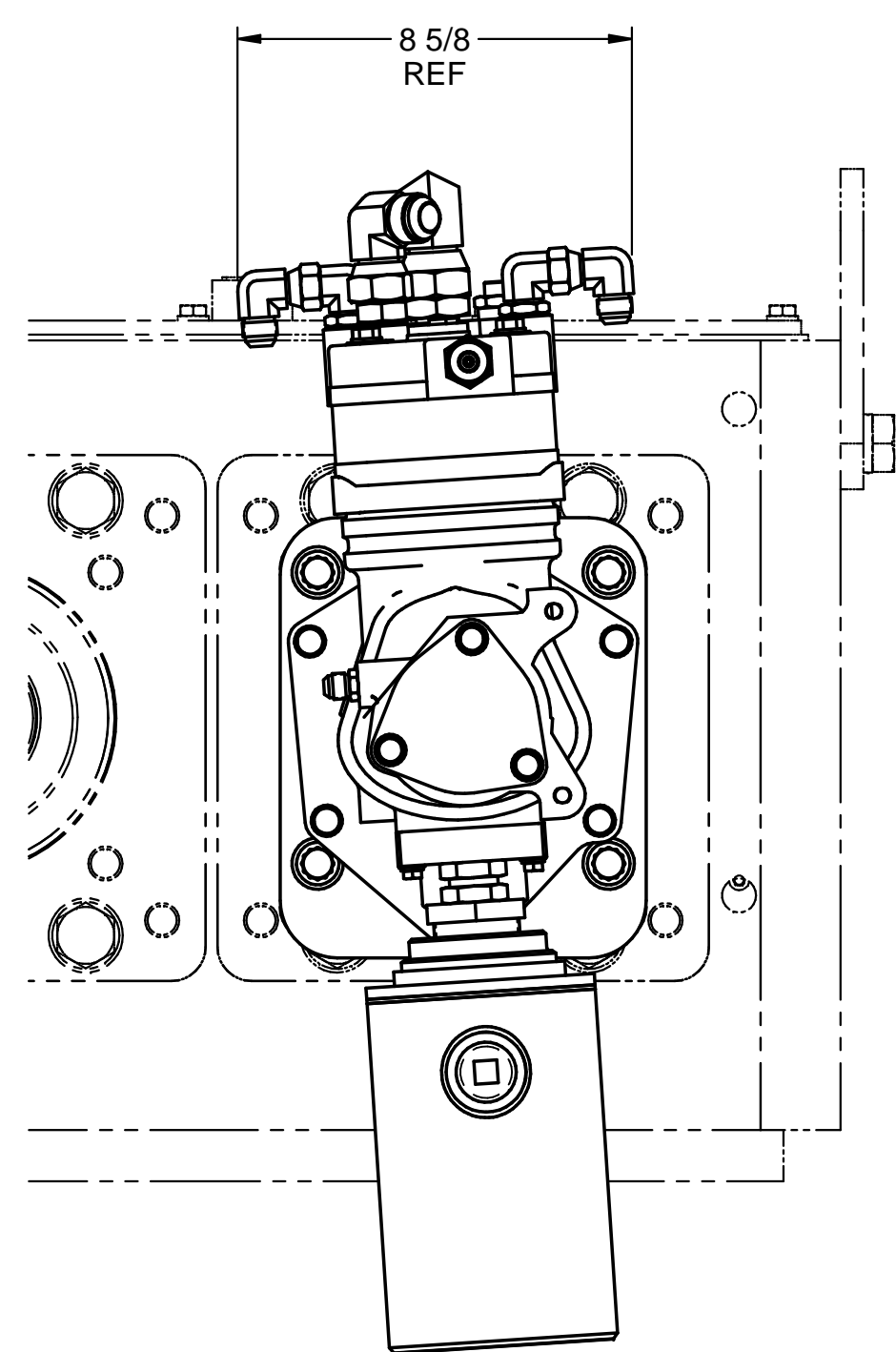
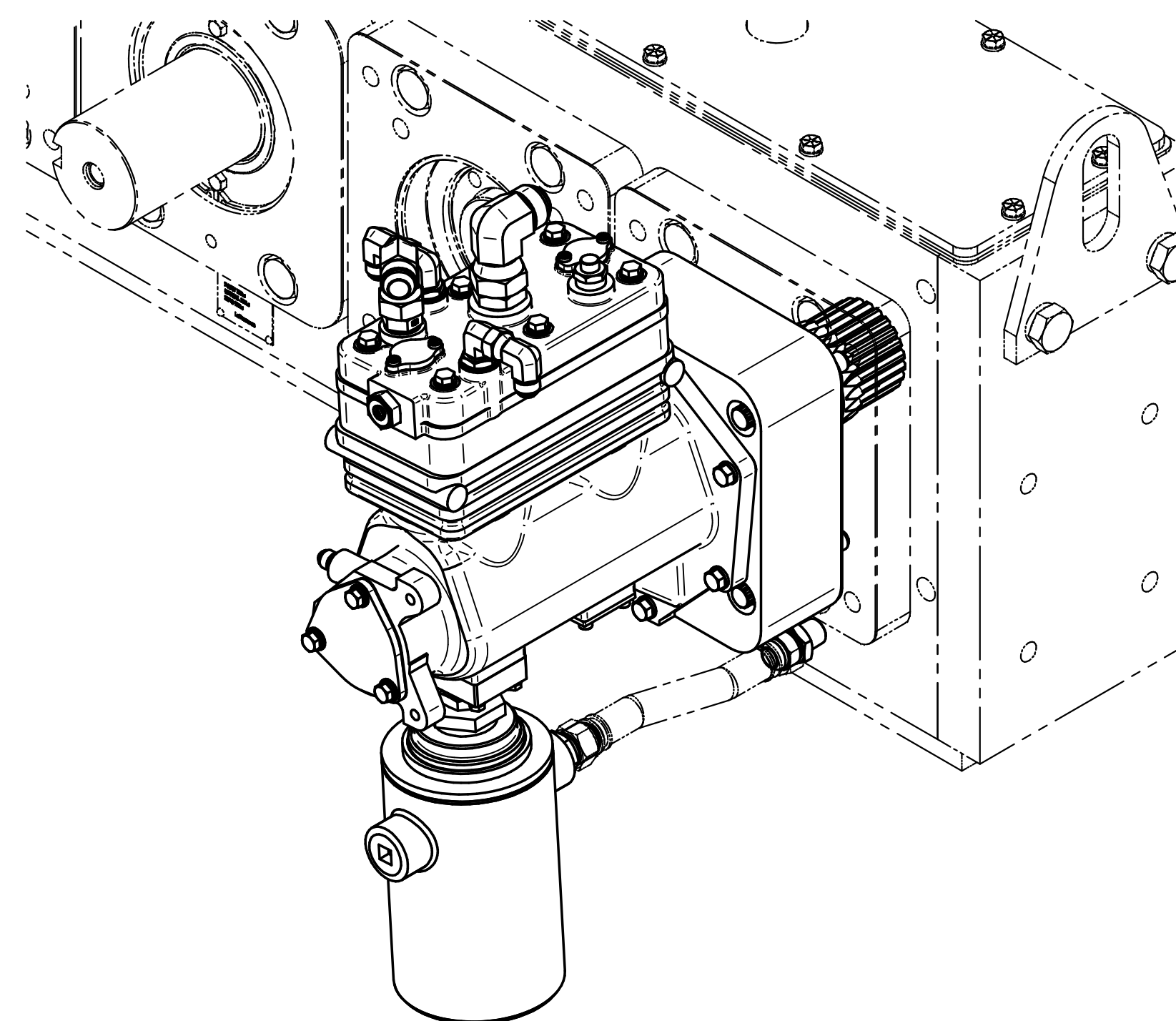
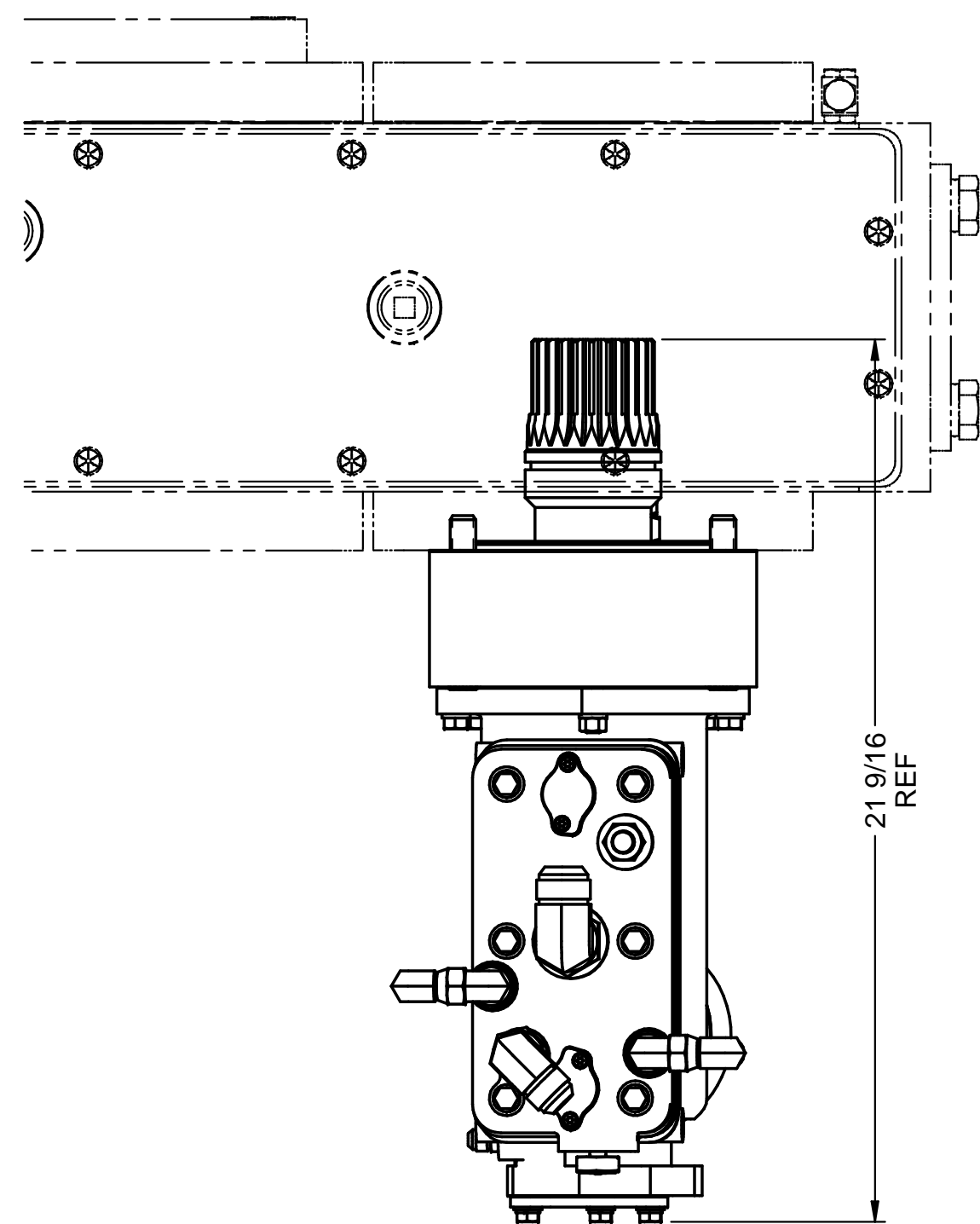
**LeTourneau Technologies™**

**GP AIR COMPRESSOR**

SIZE **D** DO NOT SCALE DWG NO. **4261548** REV **01**

SCALE 1/4 EST WT 142.0 lbrn SHEET 1 OF 2

REVISIONS							
ZONE	REV	DESCRIPTION	ECN	DATE	CHG	CHK	APP
	00	RELEASED	NL11-0349	3-16	WPG	SEM	SEM
	01	SEE SHEET 1	NL12-1862	6-21	TEW	AY	AY



GP AIR COMPRESSOR		SIZE	<b>D</b>	DO NOT SCALE	DWG NO.	<b>4261548</b>	REV	<b>01</b>
DRAWN	wgoff	SCALE	1/4	EST WT	142.0 lbm	SHEET	2 OF 2	
ISSUED	3-16-11							